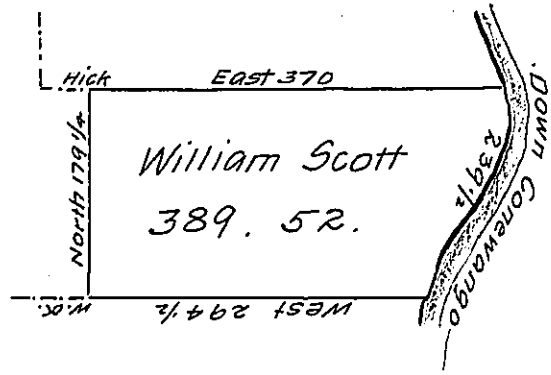


Pg 180
John Scott



Courses on the River

- ~~S. 60° W. 84~~
 - ~~S. 30° W. 36~~
 - ~~S. 18° E. 35~~
 - ~~S. 16° W. 58~~
 - S. 50° E. 26 1/2
 - S. 16. W. 58
 - S. 18. E. 35
 - S. 30. W. 36
 - S. 60. W. 84.
- 239 1/2

James Scott
Pg 170

*Surveyed on the 6th. day of July 1795 the above descri-
 bed Tract of Land in District No. 6 in pursuance of a Warrant to William
 Scott dated 20th. December 1793 containing Three Hundred & Eighty nine
 Acres; Fifty two Perches and allowance of Six per Cent.*

Saml Nicholson D.S.

*To Daniel Brodhead Esqr. }
 Surveyor General }*

*IN TESTIMONY that the above is a copy of the original remaining on file in
 the Department of Internal Affairs of Pennsylvania, made
 comformably to an Act of Assembly approved the 16th day of
 February 1833, I have hereunto set my hand and caused
 the Seal of said Department to be affixed at Harrisburg,
 this first day of March 1907.*

Isaac D Brown
 Secretary of Internal Affairs.